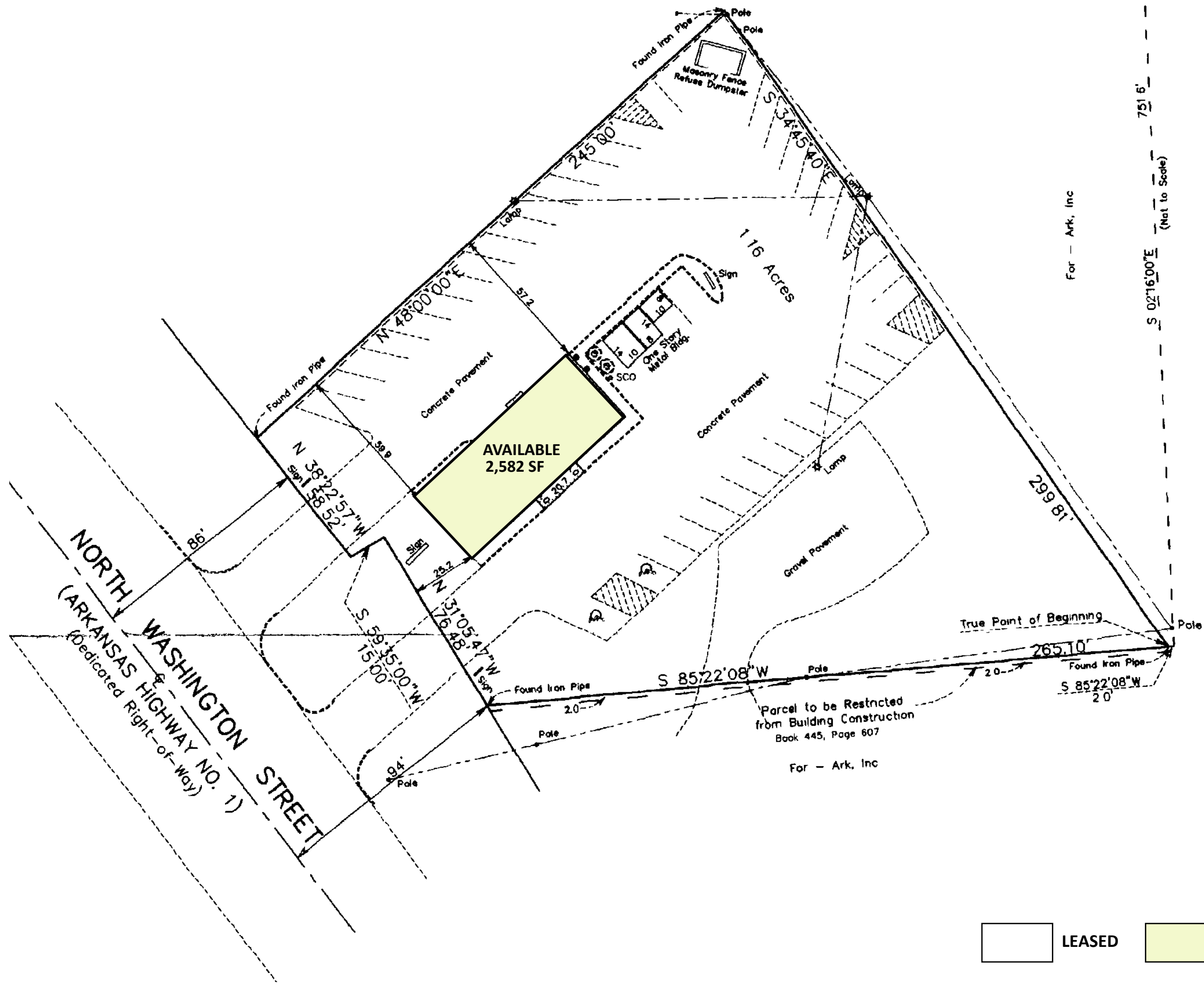


**FORMER WENDY'S
FORREST CITY, AR**

3302 NORTH WASHINGTON ST.

SITE PLAN
SP



LEASED
 AVAILABLE

For - Ark, Inc

For - Ark, Inc

Parcel to be Restricted
from Building Construction
Book 445, Page 607

751.6' (Not to Scale)

S 02°16'00"E

299.81'

True Point of Beginning

265.10'

S 85°22'08"W

2.0'

S 85°22'08"W

Found Iron Pipe

2.0'

Pole

Pole

Pole

1.16 Acres

Found Iron Pipe
Masonry Fence
Refuse Dumpster

Pole

Pole

S 34°45'40"E

245.00'

Lamp

Lamp

N 48°00'00"E

57.2

Concrete Pavement

Concrete Pavement

Concrete Pavement

Concrete Pavement

Concrete Pavement

Concrete Pavement

Concrete Pavement

Concrete Pavement

Concrete Pavement

Concrete Pavement

Concrete Pavement

Concrete Pavement

Concrete Pavement

Concrete Pavement

Concrete Pavement

Concrete Pavement

Concrete Pavement

Concrete Pavement

Concrete Pavement

Concrete Pavement

Concrete Pavement

Concrete Pavement

Concrete Pavement

Concrete Pavement

Concrete Pavement

Concrete Pavement

Concrete Pavement

Concrete Pavement

Concrete Pavement

Concrete Pavement

Concrete Pavement

Concrete Pavement

Concrete Pavement

Concrete Pavement

Concrete Pavement

Concrete Pavement