

THE LAKES MALL

5600 Harvey St. Muskegon, MI 49444

PROPERTY

Demographics	1 mile	3 miles	5 miles
Population	1,682	18,594	66,986
Avg. HH Income	\$84,220	\$105,281	\$95,817
Total Households	733	7,552	26,039

HIGHLIGHTS

- Located where US Highway 31 & I-96 converge
- Surrounded by major national retailers such as Target, Kohl's & TJ Maxx
- Heart of retail activity for the Muskegon Market

NOTES

- GLA: 587,946 SF
- Availabilities: Anchor, Inline, Outparcel
- Traffic Count: 18,362 VPD US Highway 19
16,750 S. Harvey St.
16,779 E. Sternberg Rd.

ANCHORS

- Dick's, JC Penney & Family Farm & Home



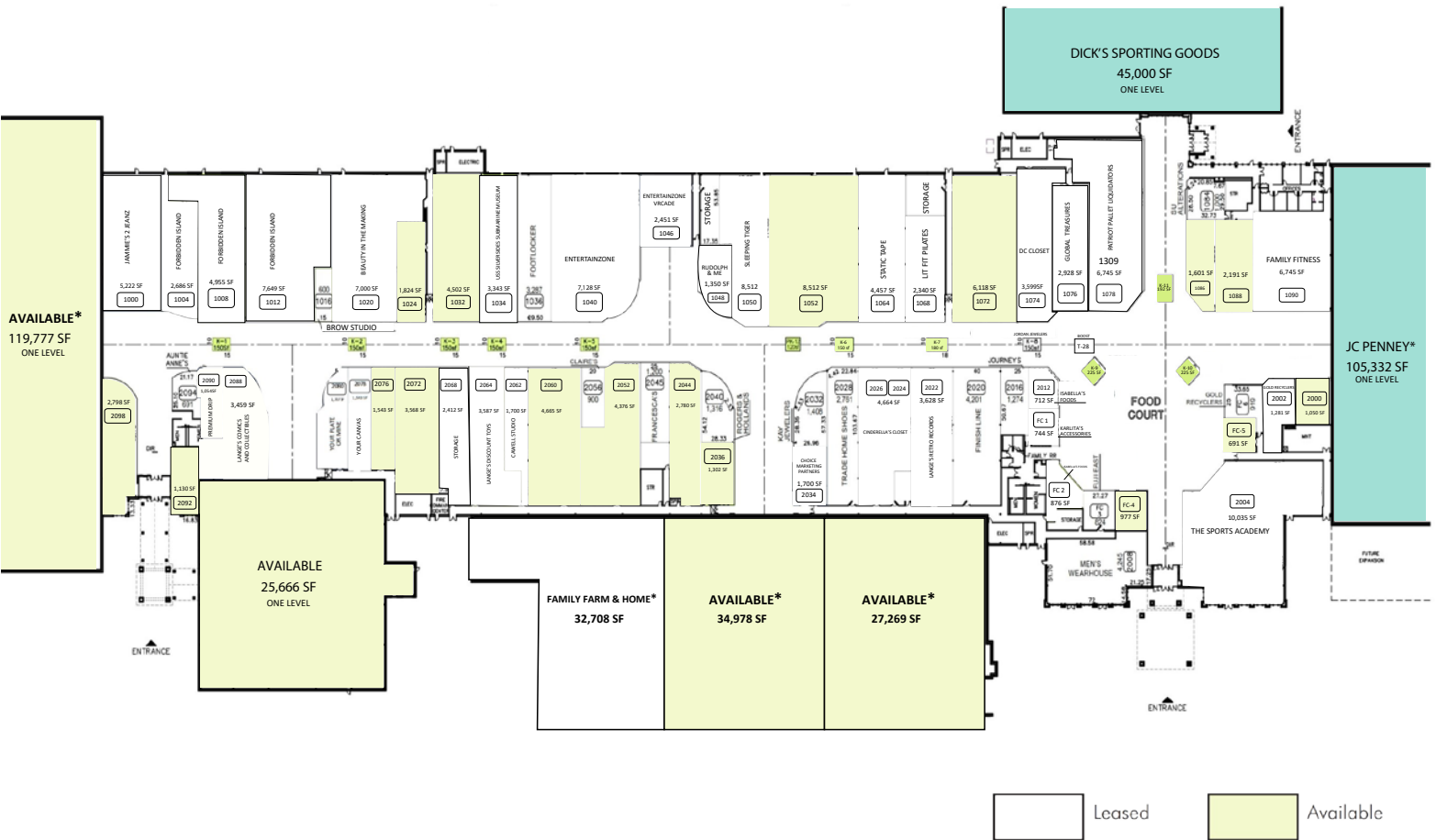
MASON
ASSET MANAGEMENT

T: 516 371.5858
E: leasing@masonam.com
150 Great Neck Road Suite 402
Great Neck, NY, 11021
www.masonam.com

THE LAKES MALL

5600 Harvey St. Muskegon, MI 49444

LEASE PLAN



*NOT OWNED



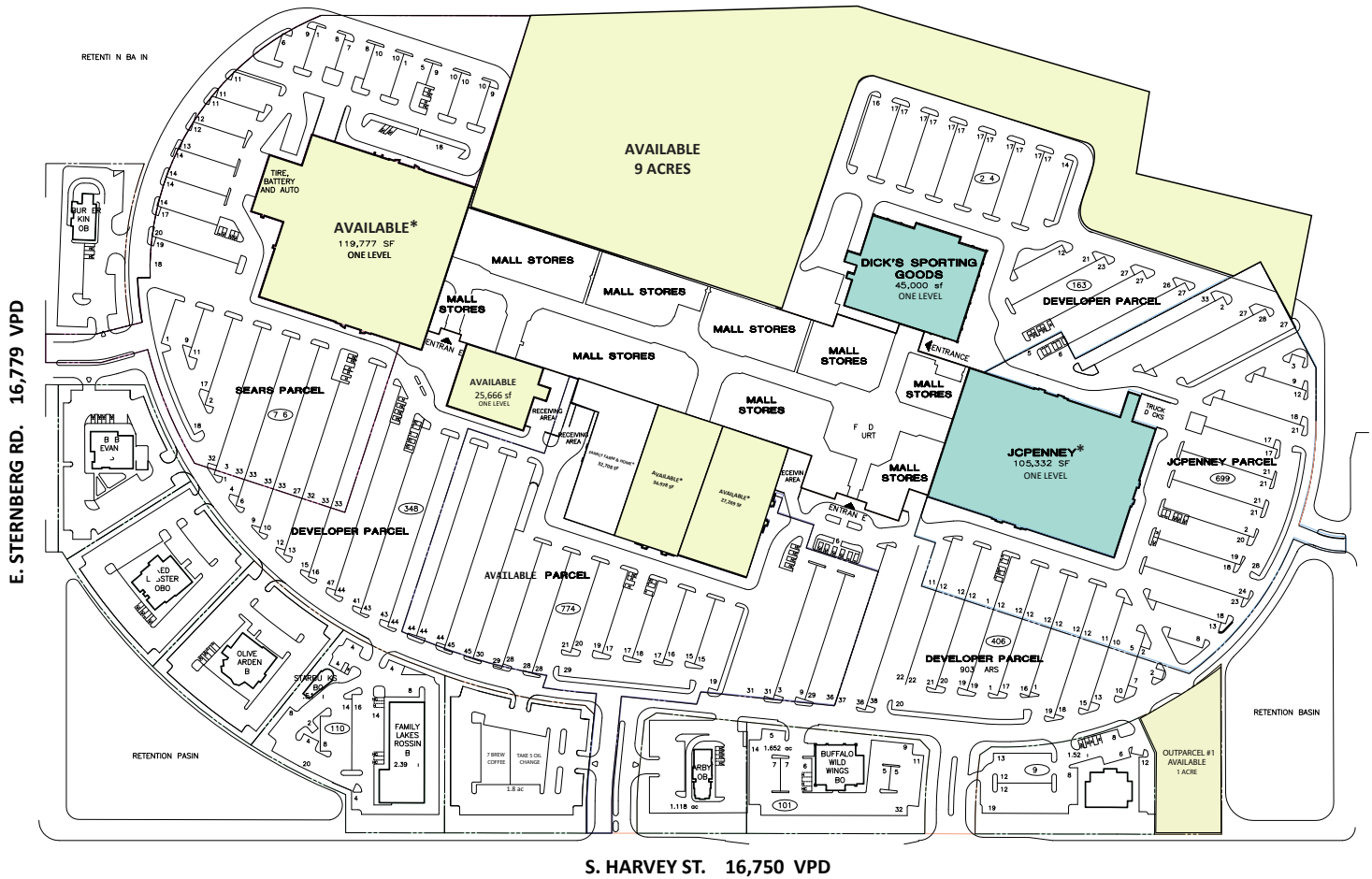
MASON
ASSET MANAGEMENT

T: 516 371.5858
E: leasing@masonam.com
150 Great Neck Road Suite 402
Great Neck, NY, 11021
www.masonam.com

THE LAKES MALL

5600 Harvey St. Muskegon, MI 49444

SITE PLAN



*NOT OWNED



MASON
ASSET MANAGEMENT

T: 516 371.5858
E: leasing@masonam.com
150 Great Neck Road Suite 402
Great Neck, NY, 11021
www.masonam.com

THE LAKES MALL

5600 Harvey St. Muskegon, MI 49444

RETAILER MAP



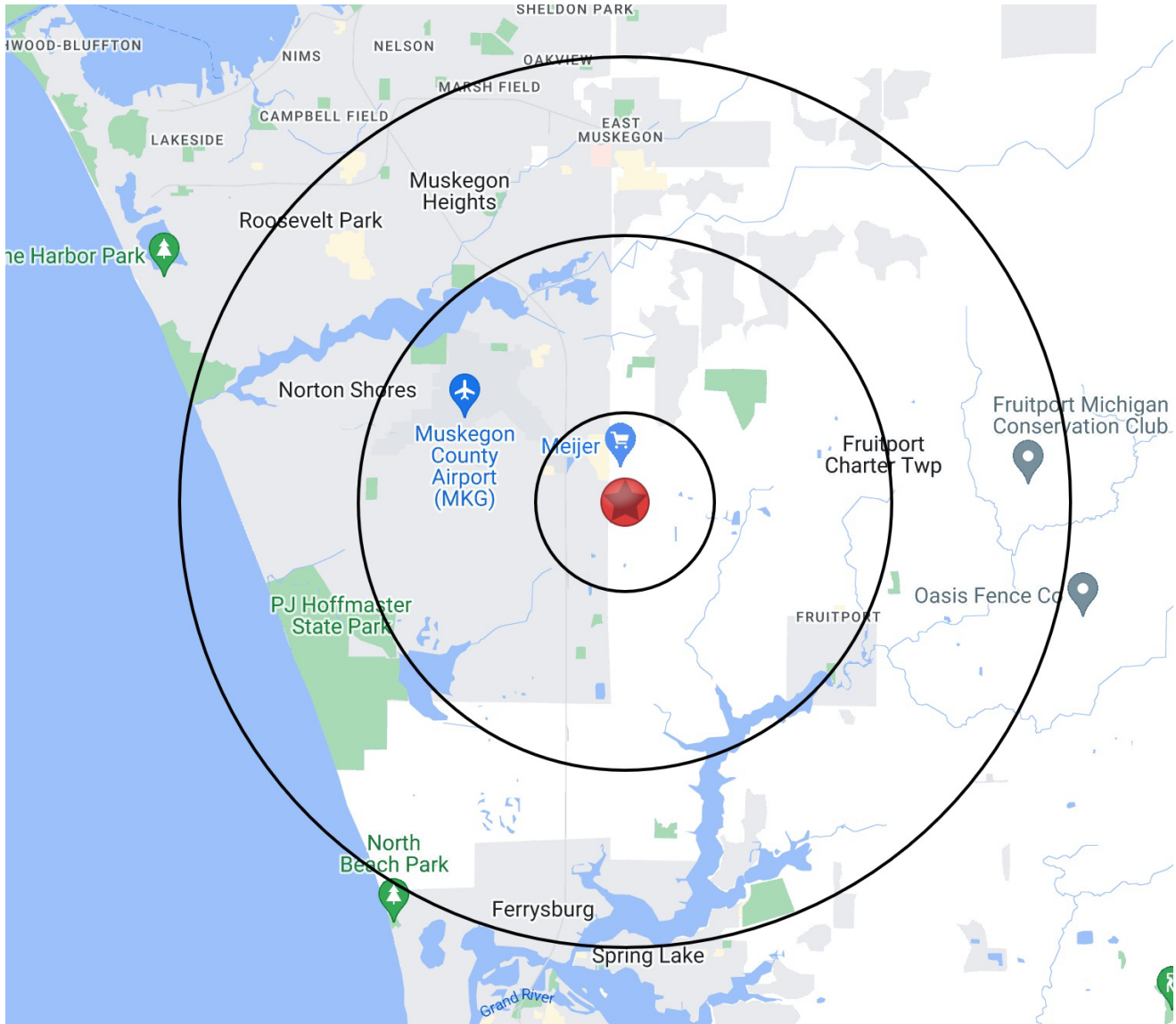
MASON
ASSET MANAGEMENT

T: 516 371.5858
E: leasing@masonam.com
150 Great Neck Road Suite 402
Great Neck, NY, 11021
www.masonam.com

THE LAKES MALL

5600 Harvey St. Muskegon, MI 49444

RADIUS MAP



MASON
ASSET MANAGEMENT

T: 516 371.5858
E: leasing@masonam.com
150 Great Neck Road Suite 402
Great Neck, NY, 11021
www.masonam.com